

SIGMASKY SKYLIGHT



STRONG SUSTAINABLE SMART ROOFING

Upgrade to the future of construction with Fiberglass Reinforced Polymer (FRP) - A higher performance material engineered for strength, durability and reliability.



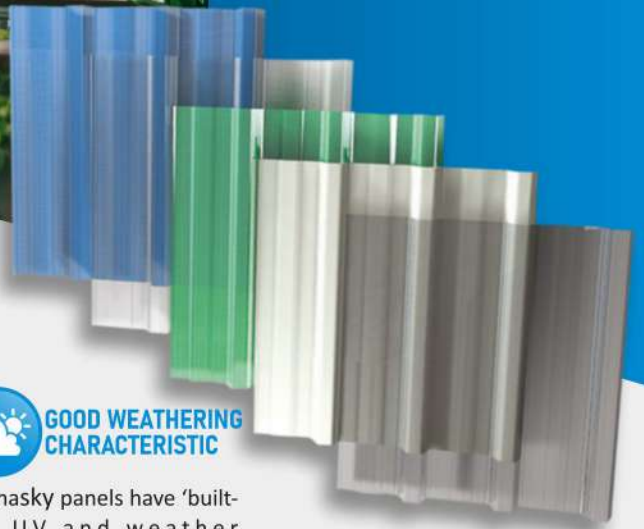
We bring the sun to you indoors...

Sigmasky Fiberglass Reinforced Polymer (FRP) roofing and gutter provide the perfect green roof solution to meet your sustainable building lighting and energy saving requirements.

Why pay for what nature provides for free? Why pay for the best light that you can have...The Sun



Sigmasky translucent reinforced polymer roofing panels substantially reduce the amount of artificial illumination and electricity needed to light the inside of your building. Sigmasky has a product designed to meet your expectation. In addition to translucent and strong panels, Sigmasky products are designed to fully optimize corrosion resistance, and to become the most durable, longest lasting fiberglass building panels on the market today.



Why **SIGMASKY** ?



Sigmasky offers fire retardant properties, providing enhanced protection to help safeguard your building against fire.



Sigmasky uses metallic dust to help diffuse light better than other materials.



Sigmasky panels have 'built-in' UV and weather protection. There is no need to apply costly coatings or film. The outer exteriors of Sigmasky are coated by Fortified Polyester.



Sigmasky panels are strong, durable and shatter resistant. They have a high strength to modulus ratio.



Sigmasky panels remain virtually unaffected in many chemical environments. There'll be no rust, rot, scale or mildew.



Sigmasky offers a wide range of manufacturing and technical capabilities to meet specific needs. Sigmasky are available in a wide range of colors, finishes and profiles are adaptable.



Sigmasky panels are naturally resilient and withstand large deflections associated with normal load and impact conditions.

Sigmasky FRP roof panel provide the perfect green roof solution to meet your building lighting requirements.

Translucent panels provide the perfect green roof solution to meet your building lighting requirements; substantially reducing the amount of artificial illumination and electricity needed to light the inside of your building.

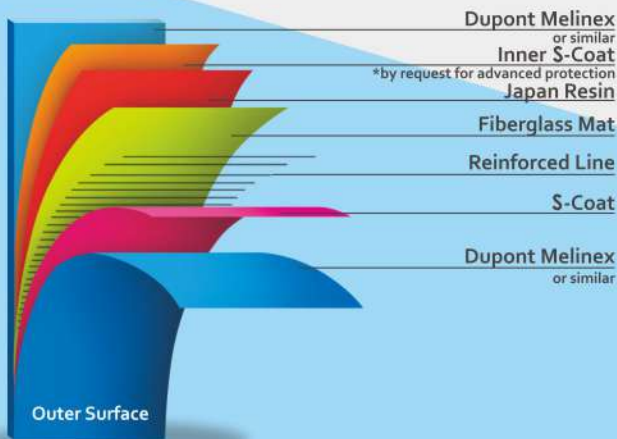
Fiberglass roofing panels are more dimensionally stable than competing materials such as PVC or Polycarbonate. Fiberglass roofing panels can be used over a much broader temperature range without concern of warpage, excessive expansion and contraction or cracking and brittleness commonly associated with these competing products.

Translucent reinforced corrugated fiberglass skylight panels are ideal for:

- Residential awnings over patio decks and windows
- Pergola and gazebo coverings
- Carports
- Restaurant and commercial canopies and walkways
- Barn skylights & other agricultural building skylights
- Factory building skylights & other industrial buildings
- Metal building skylights
- Warehouse skylights, etc.

SIGMASKY FRP IS NOT STEEL

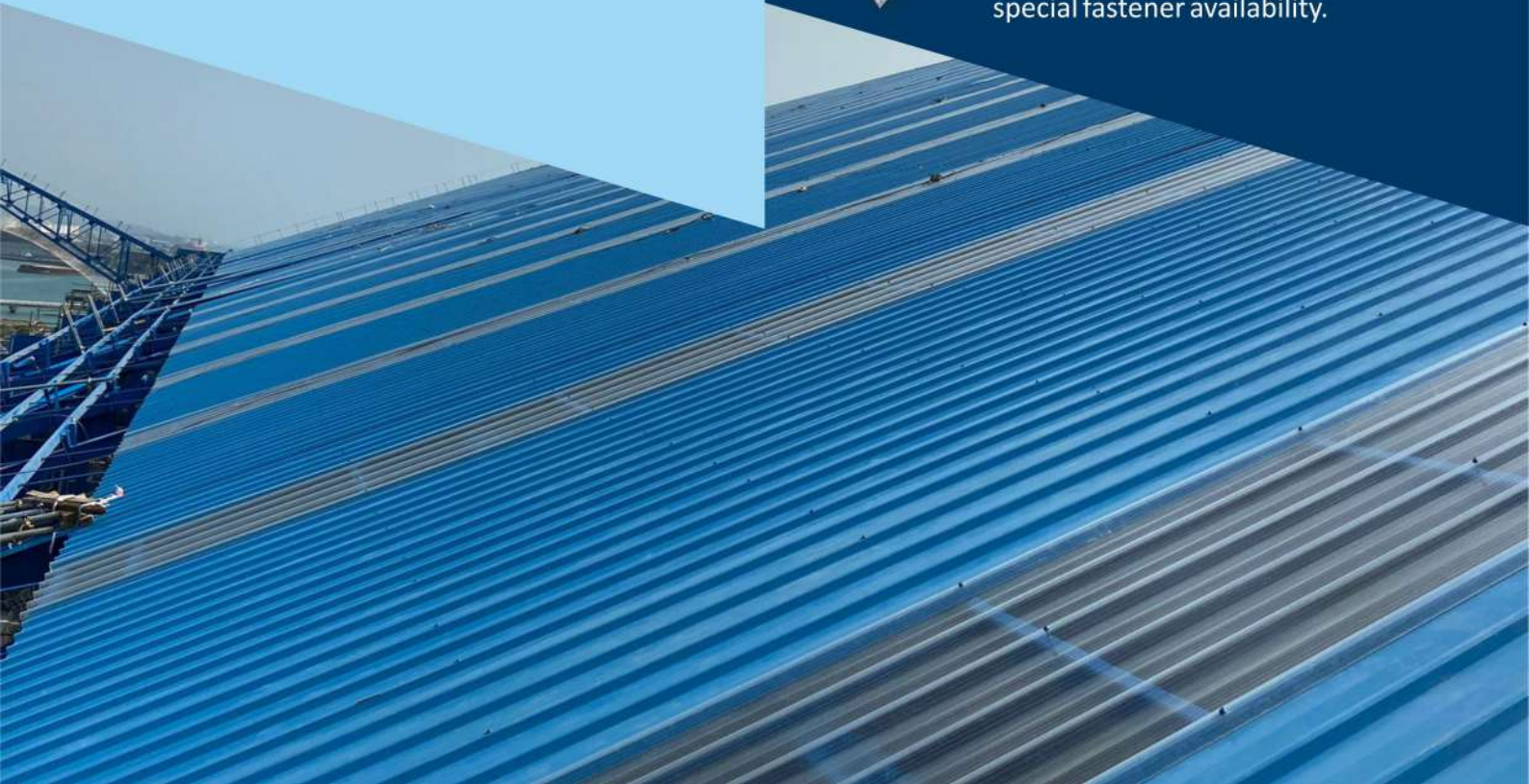
FRP Panels do not perform the same as steel panels and therefore should not be designed to the same requirements. Steel panels are generally 20 times stiffer than an equivalent FRP Panel of the same profile.



OPTIONAL PRODUCT ACCESSORIES

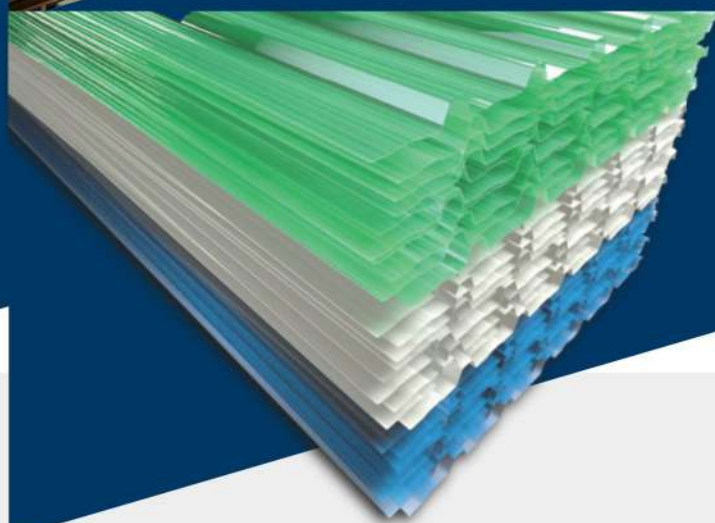
Ruspert Coating Double Seal Washer Tech.

This screw is used to fasten Sigmasky panels to steel grits and purlins. Double seal washer technology has better performance to avoid leakage. Contact us for special fastener availability.





SIGMASKY SKYLIGHT

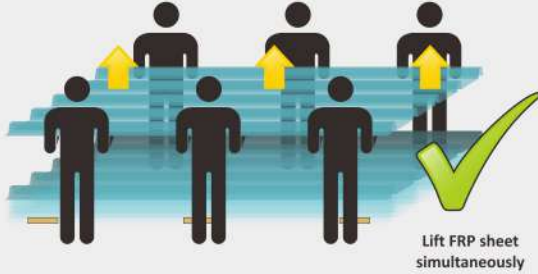


SPECIFICATION

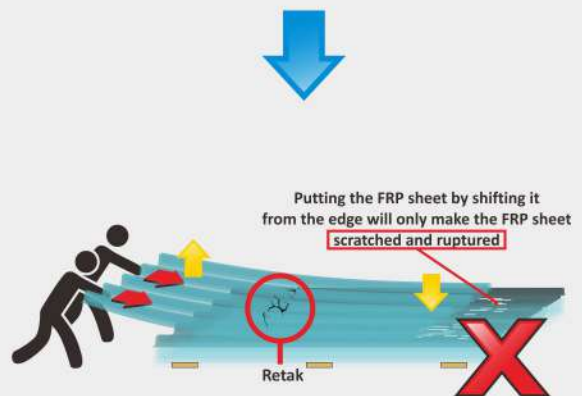
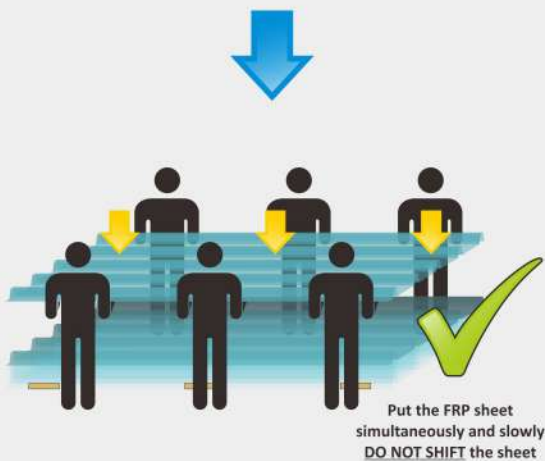
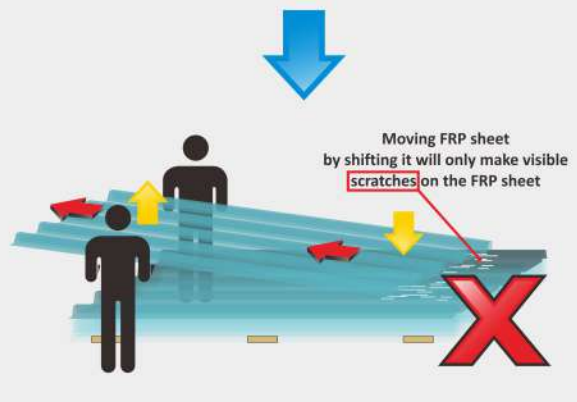
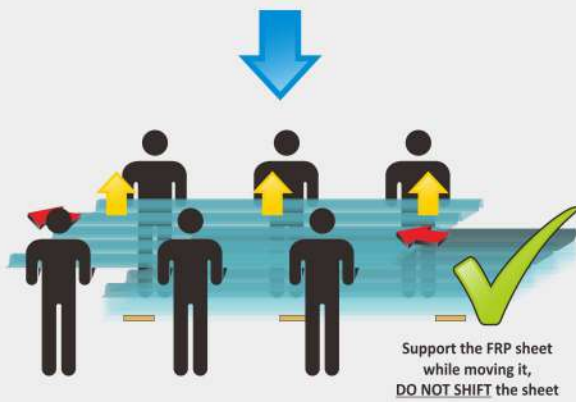
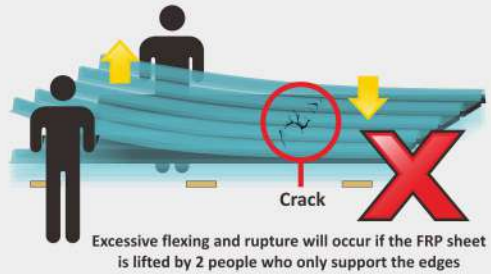
THICKNESS	1.2 mm	1.5 mm	2 mm
Flexural strength at yield (ASTM D790)	81.07 N/mm ²	109.23 N/mm ²	118.39 N/mm ²
Tensile strength at yield (ASTM D638)	49.58 N/mm ²	68.79 N/mm ²	80.82 N/mm ²
Specific gravity (ASTM D792)	0.84	0.97	1.36
Punch & shearing test (ASTM D732)	747.76 Kgf/in	831.3 Kgf/in	1790.65 Kgf/in
Thermal expansion (ASTM D696)	4.0 x 10 ⁵ m/m ⁰ C	3.39 x 10 ⁵ m/m ⁰ C	2.74 x 10 ⁵ m/m ⁰ C
Barcol hardness	43.04 +/- 2.07	49.60 +/- 0.82	51.20 +/- 2.27
Accelerated UV test (ASTM D4329)	Grade 4	Grade 4	Grade 4

SIGMASKY MATERIAL HANDLING

DO



DON'T



COLOR SELECTION

SIGMASKY Fiberglass Reinforced Polymer (FRP) Translucent Panel has diversified selection of colors available. And varied choices of transparency, from totally clear sheet, 50% transparency, to total non-transparent opaque, as follows:



SIGMAFLOW GUTTER

For long lasting Gutter Solution



SIGMAFLOW gutter and downspout system was developed specifically for FRP-clad buildings in environments which can destroy painted metal and vinyl systems. While rain washes corrosive materials off wall and roof panels, significant amounts of these materials may actually accumulate in gutter sections. Gutter and downspout system components have to withstand even worse corrosive conditions than ordinary FRP panels.

SIGMAFLOW gutter is specifically designed with versatility in mind, this gutter will suit most field conditions. The continuous flange mounts under the roof panel thus eliminating the need for separate eave flashing. Connectors, inserts and adapters conveniently fit snugly together.

V-SKY	PRODUCT SPECIFICATION
Description:	The product shall be Sigmaflex Glass Reinforced Polyester Sheeting
Surface Coating:	TOP: Fortified Polyester UNDER: Fortified Polyester
Resin System:	The Resin System shall be.....[HPRS, 50FR, 25HTH or other]
Product Certification:	ASTM D790, ASTM D638, ASTM D792, ASTM D732, ASTM D696, ASTM D2583, ASTM D4329
Production Manufacturing Standard:	To ISO 9001:2015
Profile:	The Profile shall be.....
Weight:	The Weight shall be.....[1800, 2400, 3050, 3660, 4880 or other g/m ²]
Colour:	The Colour shall be.....[CLEAR, MILK WHITE, WHITE BLUE or other]
Installation:	To be carried out in accordance with the United States Design and Installation of sheet roof and wall cladding products ASTM Standard and Zelltech V-sky Roofing Products Co Ltd Installation and Maintenance procedures

Advantage of using SIGMAFLOW Gutter:

- Strength where it's needed most
- Performance and aesthetics
- Quick and easy installation





PT. CELLINDO SIGMAPERKASA

ADDRESS:

Jl. Raya Pasinan
Desa Jabon - Mojokerto
Indonesia
Phone: +62 321 329003, +62 321 5281212
+62 811 362 992